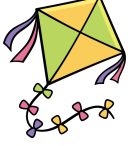


/ tha / MEDIAL SOUND (/t/ Medial)

पतंग
patang



किताब
kitab



संतरा
santra



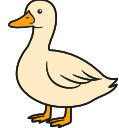
बर्तन
bartan



छतरी
chhatri



बतख
batakh



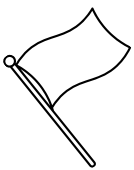
माताजी
mataji



सितारा
sitaara



पताका
pataaka



चतुरंग
chaturang



मतका
matka



पतलून
patloon

